

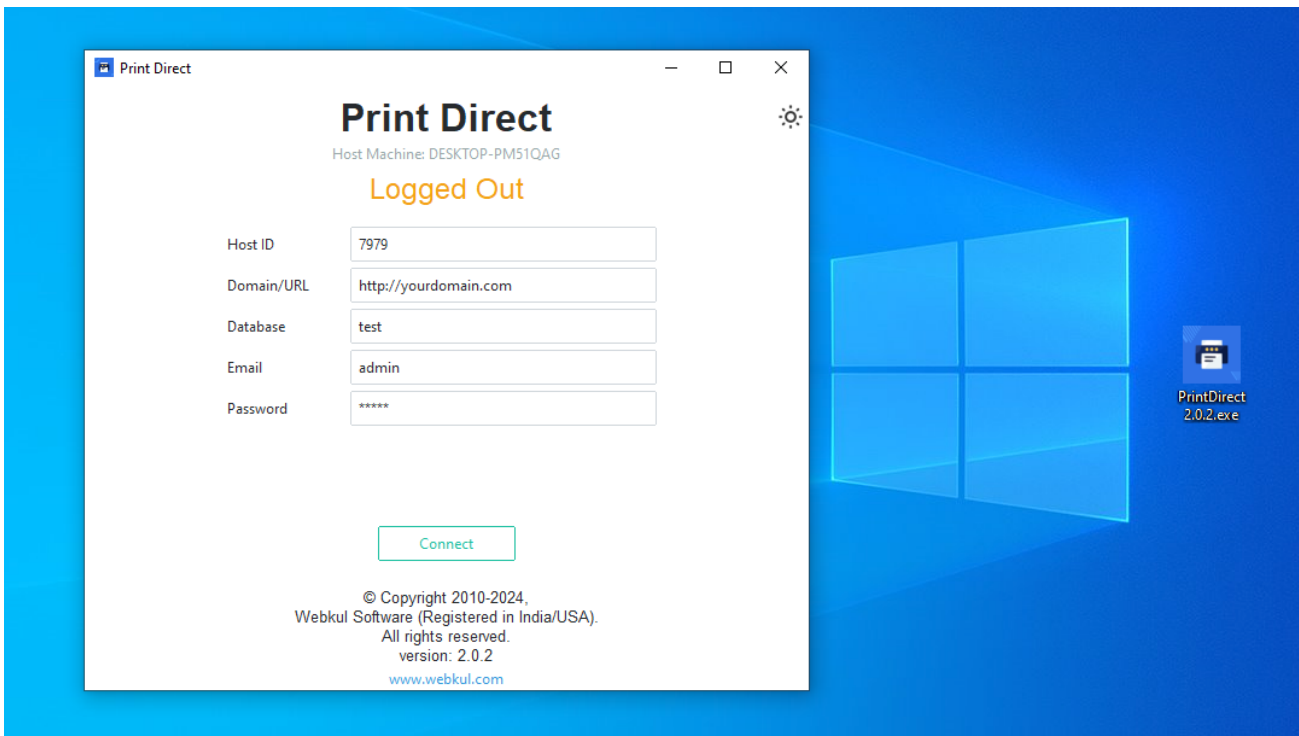
# Print Direct

Print your reports and attachments directly with Odoo.

Visit: [https://apps.odoo.com/apps/modules/18.0/wk\\_odoo\\_direct\\_print](https://apps.odoo.com/apps/modules/18.0/wk_odoo_direct_print) for more details.

## Configuration Guide

1. First install the Odoo Module.
2. Double click on the **PrintDirect** Application to run the desktop application.



3. Fill in your odoo details like domain, database name, email/user and password.
  - Host ID** : This is a unique id to distinguish each of your machines.
  - Domain/URL** : Enter your full domain along with the protocols (like `http://yourdomain.com` or `https://yourdomain.com`). Specify if you are running on a particular port (eg: `http://127.0.0.1:8069`)
  - Database** : Enter your odoo database name. (You can view this after activating developer mode on Odoo.)
  - Email**: Your existing email used for Odoo login.
  - Password**: Enter password.

Database

Select

Email

Email

Password

Password

Log in

**Print Direct**  
Host Machine: DESKTOP-PM51QAG

**Logged Out**

Host ID	<input type="text" value="7979"/>
Domain/URL	<input type="text" value="http://yourdomain.com"/>
Database	<input type="text" value="test"/>
Email	<input type="text" value="admin"/>
Password	<input type="password" value="*****"/>

© Copyright 2010-2024,  
Webkul Software (Registered in India/USA).  
All rights reserved.  
version: 2.0.2  
[www.webkul.com](http://www.webkul.com)

4. Connect the application. Your device will be added to Odoo.

5. On Odoo, you can see the list of the connected devices, goto [Print Direct > Host Machine](#). The logged in user on 'Grant Access to' is by default granted access to this machine. If you want other users to use this machine simply add them here. No need to login to the application with different users.

You can set multiple users to a machine, and one user can have multiple access to other machines.

**Print Direct** Host Machine Printer Configuration Print Jobs

Host Machine  
DESKTOP-PM51QAG ⚙️

**Fetch and Add Printers**

Name  
**DESKTOP-PM51QAG**

Description ?  
Eg: Noida Branch

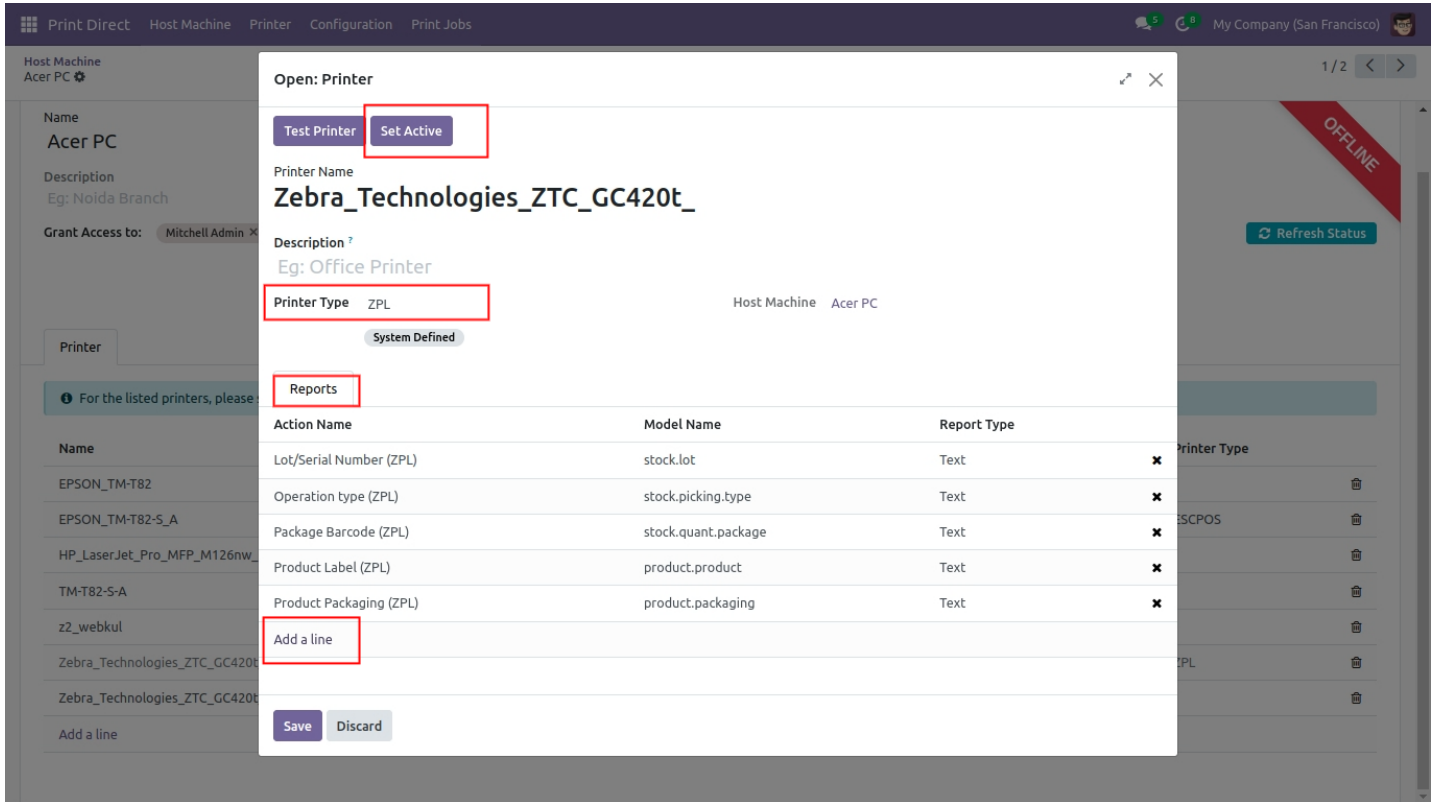
**Grant Access to: ?** Marc Demo × Mitchell Admin × Joel Willis ×

6. Open the hostmachine, click on **Fetch and Add Printers**. This will add your printers. If you add a new printer on your machine later, simply click on **Fetch Printers** again to add it.

7. Set the proper printer type and set it active.

You can choose between ZPL for Zebra printer, PDF for HP and other printer (printing A4), and ESCPOS for Thermal/Label printers.

Click on **Set Active**.

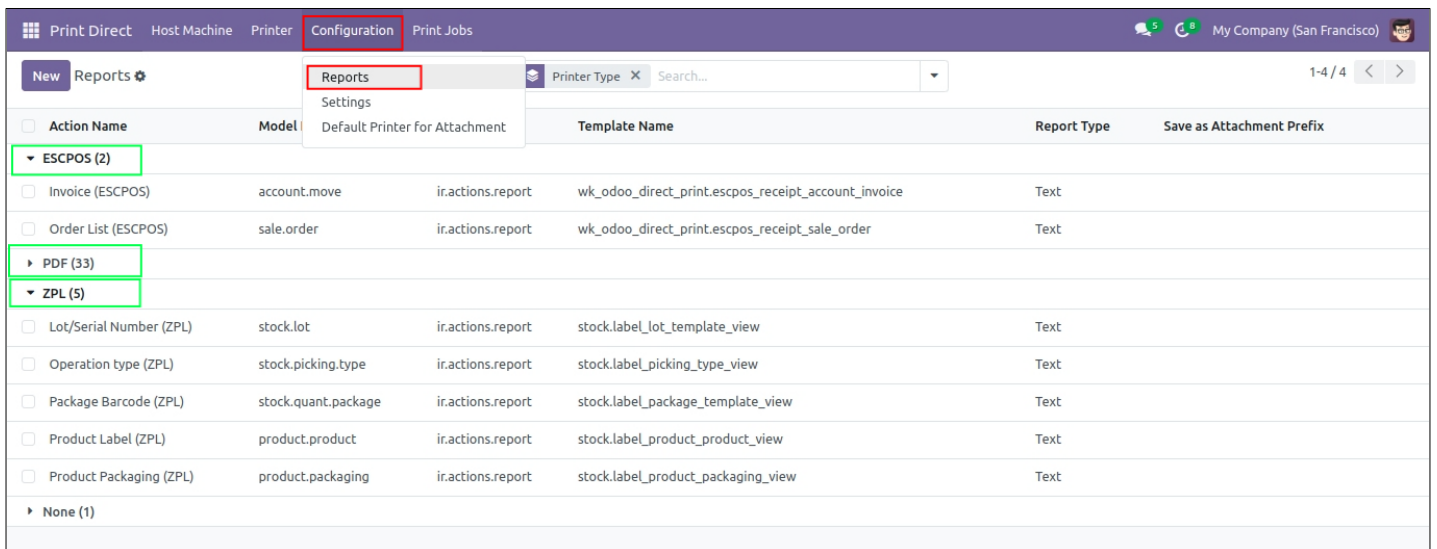


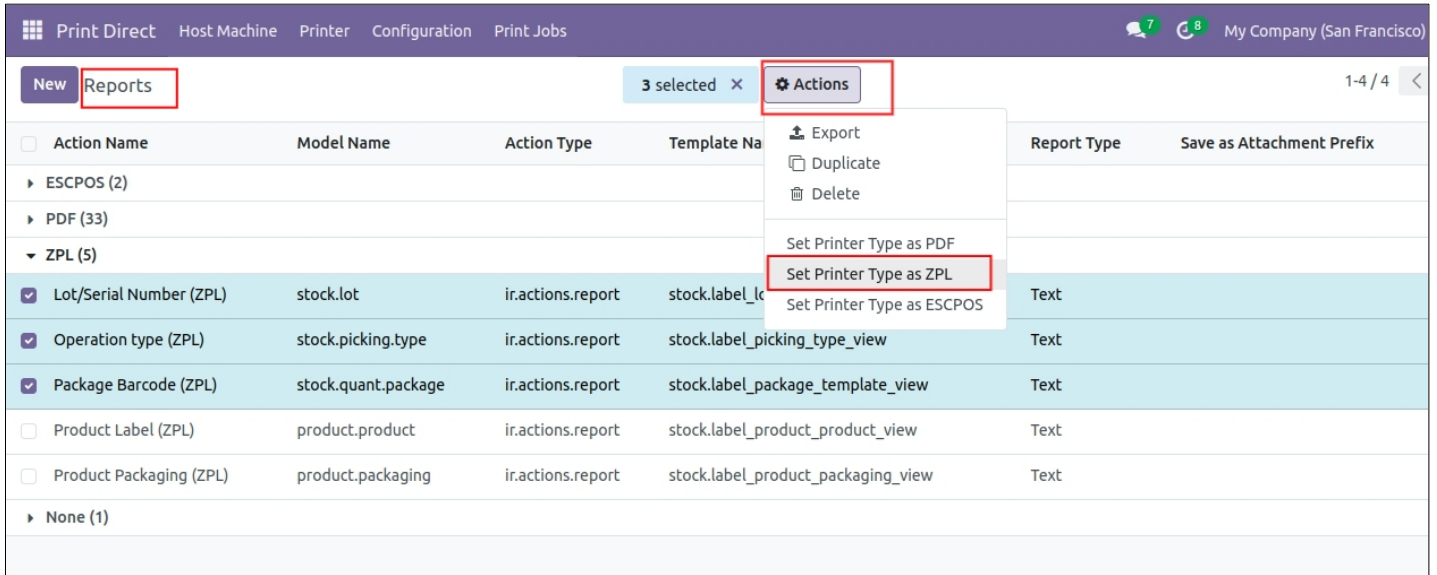
8. Add the reports that you want to print on that printer. The next time you click on the reports from the form view, it will be sent to the printer.

If any report is not listed when you click on *Add a Line* to add reports, then

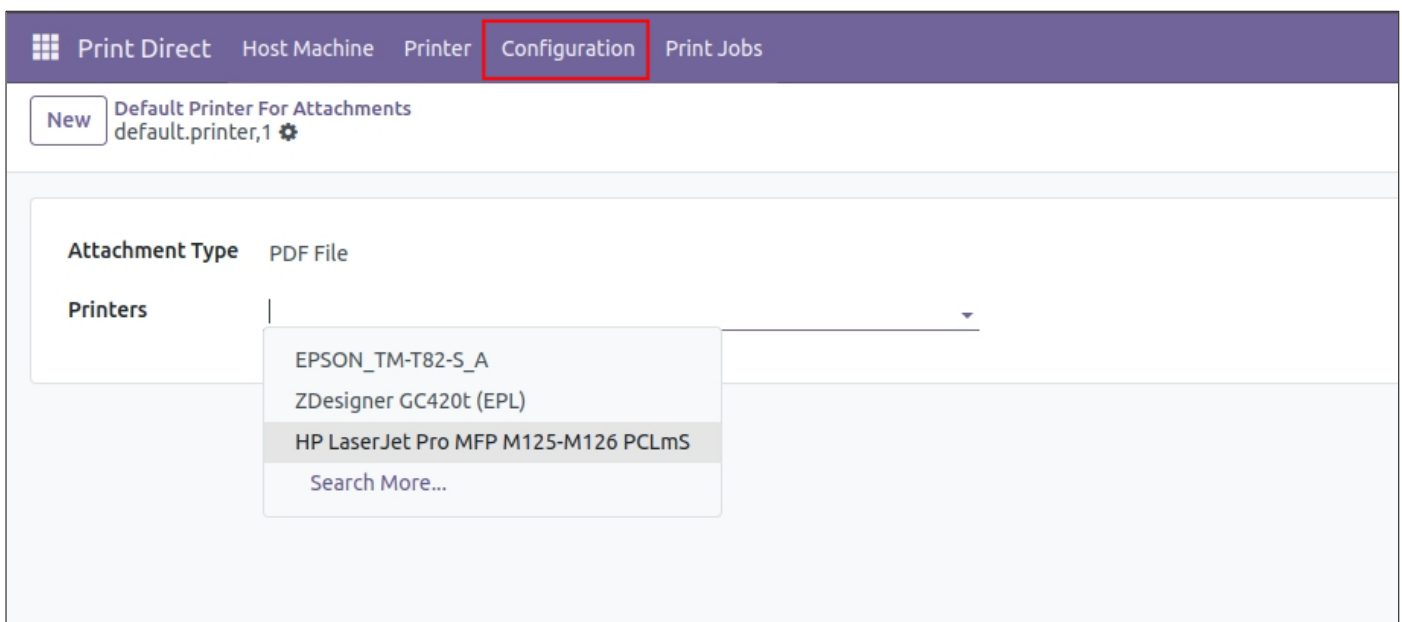
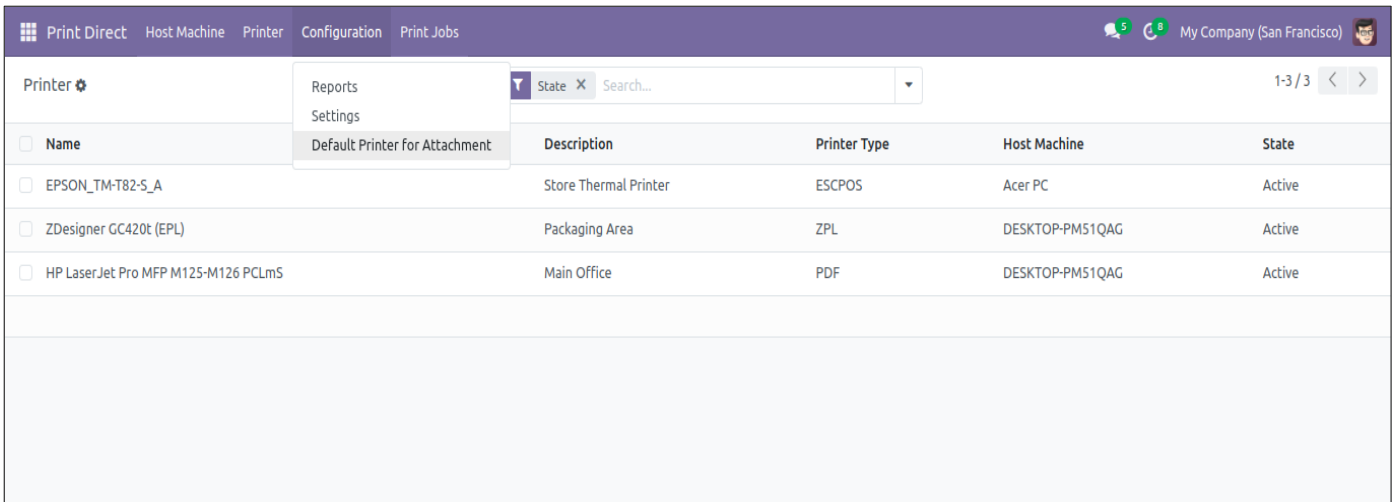
Go to **Print Direct > Configuration > Reports**.

Open a report and choose the Printer Type, between ZPL, PDF, and ESCPOS.





9. Goto [Print Direct > Configuration > Default Printer for Attachment](#). Configure the printer according to the attachments file like ZPL for Zebra printer and PDF for your PDF files.



10. Your module set up is complete. Goto to [Print Direct > Print Jobs](#) to view your printing activity.

**Extra Settings:**

1. You can automate to delete the old print jobs, this will free up your space and improve memory managements.

Activate developer mode and Goto [Print Direct > Configuration > Cron > Clean Print Jobs](#). Set it Active, by default *Delete Print Jobs Older then 3 days* is set.

Tip: Simply close the desktop application without Log Out, your session will be stored. The next time your DirectPrint application starts, it with auto connect with Odoo.

**Raw Printer**

- Raw printers are used to send commands directly in its native language, bypassing the need for third party drivers.

They are very fast and mostly used for label and receipt printing, example Zebra, Escpos, Eltron, Star, etc. Printers.

**Do I need to configure Raw Printer?**

Most newer operating systems(like Windows) can detects these Raw Printers (like Zebra for ZPL, Epson for ESCPOS, etc.) and add them to your PC.

You can simply plug-n-play these printers and can directly send print commands to them.

If you don't see your printer get automatically added on the Control Panel, then you will need to add it manually.

View the printers on contol panel:

<https://webkul.chatwhizz.com/share/screenshot/65f80e69cdaeae108327a329>

**How to add/configure Raw Printer on Windows?**

1. Go to [Contol Panel > Add Printers](#)

<https://webkul.chatwhizz.com/share/screenshot/65f80e69cdaeae108327a329>

2. If no printers are listed then Click proceed as:

<https://webkul.chatwhizz.com/share/screenshot/65f80ec93c2c0210edbb6bd8>

3. Manually add.

<https://webkul.chatwhizz.com/share/screenshot/65f80f197c85030ffcda7f4a>

4. Select the Printer that you want to configure.

An example is shown here for a Zebra printer that can print ZPL files.

<https://webkul.chatwhizz.com/share/screenshot/65f80f7d7c85030ffcda8023>

5. Select the 'Generic' option for manufacture, and 'Generic/ Text Only' option for printers, then proceed to next.

<https://webkul.chatwhizz.com/share/screenshot/65f80ff0cdaeae108327a6ec>

6. Type the Printer name for reference(of your choice).

<https://webkul.chatwhizz.com/share/screenshot/65f810837c85030ffcda8294>

Your printer is configured, now add and select this printer when using for raw printing.

## FAQ:

### 1. Does it support multiple languages?

**Ans:** This depends on the printer settings. If your RAW printer support the language, it will be printed. You will need to install proper fonts for it.

For PDF printing, all languages are supported.

### 2. Is multiple prints supported?

**Ans:** You can connect to any number of devices and send multiple prints. There are no limits to anything.

### 3. How fast I can print?

**Ans:** This totally depends on your network speed and the file size. On local network, this is super fast. If you are on a remote network, i.e. using internet; the internet speed will determine how fast the files are loaded and sent to the printer.

There are no intermediary between the [PrintDirect](#) app and your Odoo server.

### 4. Cannot add printers?

**Ans:** For [On-Premise Odoo server](#), ensure you have proper set up for the '--gevent-port'. One way to check this, is by using the [Livechat](#) on Odoo.

Improper setup may pose issue where the module will not be able to fetch the printers from your machine.

To resolve such issue start Odoo with the --proxy-mode option. Either use this as flag or append the config file with:

```
>> proxy_mode = True
```

This enables Odoo to listen to the websocket requests on a different port (default: 8072).

To avoid port conflicts, manually configure this port. eg: --gevent-port=9000

Read more about this: [https://www.odoo.com/documentation/18.0/administration/on\\_premise\\_deploy.html](https://www.odoo.com/documentation/18.0/administration/on_premise_deploy.html)

For [Windows Users](#), ensure that the application have unrestricted access to the network and ports. Check your Windows Firewall and app permissions.

### 5. Delete cache and stored data.

**Ans:** Your configuration settings are stored on your desktop. If you face any issue with login or fetching printers. Close the Print Direct application, and navigate to the corresponding folder:-

Windows: **C:/Users/<user name>/AppData/Local/Print Direct For Odoo**

Linux: **/home/users/<user name>/.local/share/print-direct-for-odoo**

Delete the folder from your computer.

Now, Restart the application.

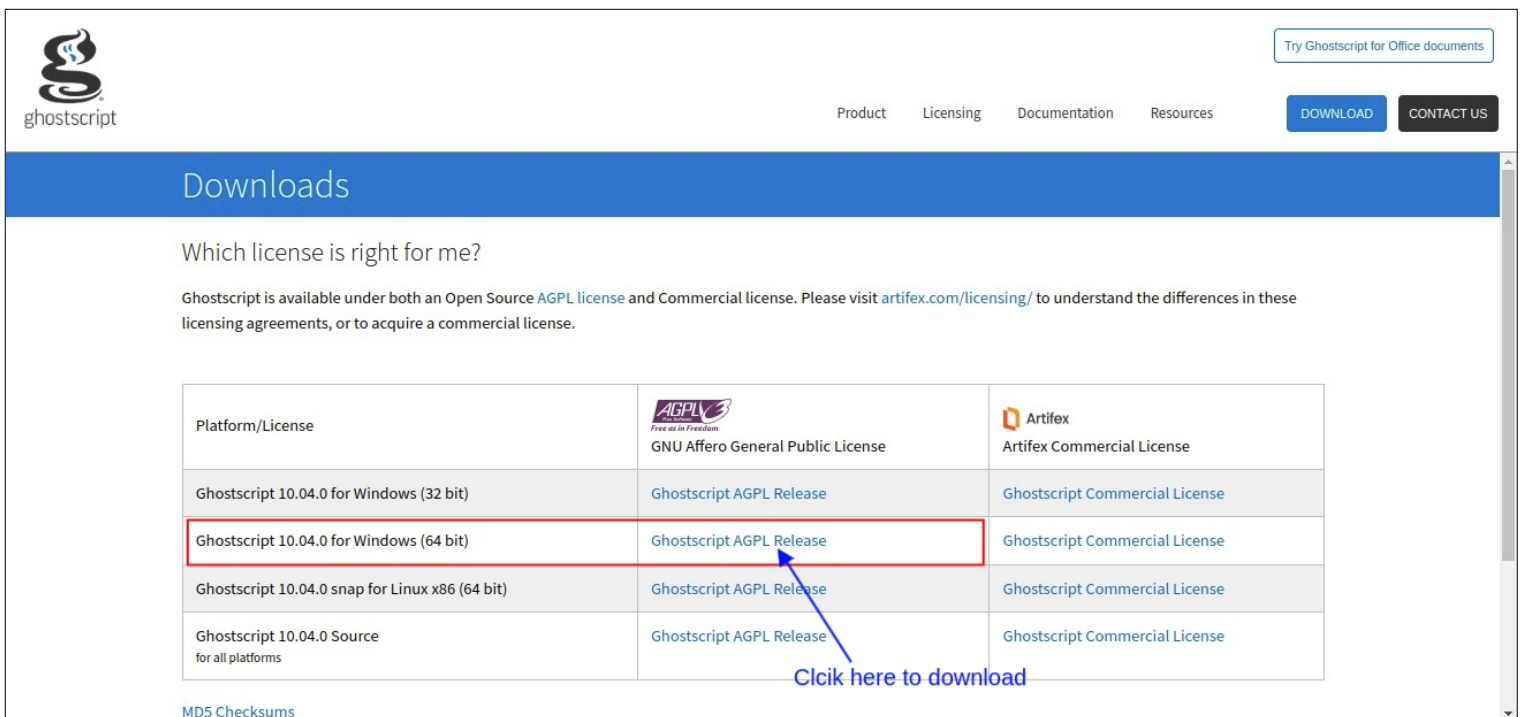
# Install Ghostscript

## For Windows User Only:

If you get an error related to ghostscript, please consider installing the open source application for Ghostscript from the official website.

Visit the official site: <https://www.ghostscript.com/releases/gsdnld.html>

Download the application(for Windows 64 bit) 'Ghostscript AGPL Release' and install it. Then, run the [PrintDirect](#) Application again.



ghostscript

Product Licensing Documentation Resources



Try Ghostscript for Office documents

DOWNLOAD CONTACT US

## Downloads

Which license is right for me?

Ghostscript is available under both an Open Source [AGPL license](#) and Commercial license. Please visit [artifex.com/licensing/](http://artifex.com/licensing/) to understand the differences in these licensing agreements, or to acquire a commercial license.

Platform/License	 GNU Affero General Public License	 Artifex Commercial License
Ghostscript 10.04.0 for Windows (32 bit)	<a href="#">Ghostscript AGPL Release</a>	<a href="#">Ghostscript Commercial License</a>
<b>Ghostscript 10.04.0 for Windows (64 bit)</b>	<b><a href="#">Ghostscript AGPL Release</a></b>	<a href="#">Ghostscript Commercial License</a>
Ghostscript 10.04.0 snap for Linux x86 (64 bit)	<a href="#">Ghostscript AGPL Release</a>	<a href="#">Ghostscript Commercial License</a>
Ghostscript 10.04.0 Source for all platforms	<a href="#">Ghostscript AGPL Release</a>	<a href="#">Ghostscript Commercial License</a>

[Click here to download](#)

[MDS Checksums](#)